



#0001010204

Maklerservice & Bewertung

Ihre Eigentumswohnung im historischen Gebäude "Posthof" nahe dem Semmering!

2641 Schottwien



Purchase price:

65.000,00 €

Living Area:

62,00 m²

Rooms:

3

YOUR CUSTODIAN



Birgit Ehold-Wlassak

Immobilienmaklerin

Raiffeisen Immobilien Vermittlung

birgit.ehold@riv.at

[+43 664 60 517 517 53](tel:+436646051751753)





DESCRIPTION

Take advantage, as it's rare to find a condominium with garden use and storage room at such an affordable price.

The building no longer reflects its glorious historic times; however, the apartment's high ceilings offer a comfortable ambiance. Above all, the proximity to Semmering, just 8 minutes by car, speaks for this ground floor apartment with plenty of storage space.



FITTINGS AND PROPERTIES

PROPERTIES

Category	Ground Floor Apartment
Usage Type	Living
Sales Type	Buy
Form of ownership	Condominium
Year of construction	1750/ Renovierung fortlaufend
Heating	Ofen: Electric

AREAS

Living Area	62,00 sqm
Base Area	2.009,00 sqm

ENERGY CERTIFICATE

Available

Energy Certificate Date	13.04.2013
Valid until	12.04.2023
HWB-Value (KWh/m ² /a)	164,00
HWB Class	 E
fGEE Value	2,03
fGEE Class	 D

SEGMENTATION

Total Rooms	3
Bathrooms	1
Toilets	1



PRICES AND FINANCIAL INFORMATION

BASE PRICES

Unit Buy Price	65.000,00 €
----------------	-------------

RUNNING COSTS

Running costs	61,90 € incl. 10% VAT
Repair Costs	59,84 € incl. VAT

TOTAL

Total Running Costs	121,74 € incl. VAT
Total buy price	65.000,00 €
Commission Buy	3% plus 20% VAT

SIDECOSTS

Costs for contract	lt. Tarifordnung Vertragserrichter
Purchase tax percent	3,5%
Land register entry percent	1,1%



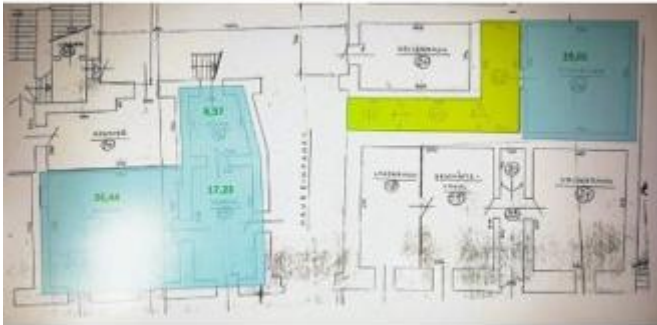
INFRASTRUCTURE AND SURROUNDING

Schottwien, a small village at the foot of the Semmering. The bus stop right in front of the house takes you to Gloggnitz with connections to the Southern Railway. You can reach the S6 motorway entrance "Gloggnitz" or "Maria Schutz" by car in just a few minutes.

The magnificent nature of the surrounding mountains invites numerous outdoor recreational activities. You can reach the skiing areas Semmering "Zauberberg" and "Stuhleck" in just a few minutes. Additionally, the local mountains of Vienna, Rax, and Schneeberg are in close proximity.



GALLERY





LINKS AND DOWNLOADS

[More information](#)

[Grundriss](#)

