



#0004003869

Modernes Büro in Neußerling

4175 Neußerling



Rent: 1.025,56 €
Usage Area: 78,00 m²
Rooms: 2

YOUR CUSTODIAN



Elisabeth Klaming
Teamassistentz - Immobilienmakler
Real-Treuhand Immobilien
klaming@rbgr.at
+43 7239 8123 32637





DESCRIPTION

Modernes Büro mitten in Neußerling mit einer Nutzfläche von ca. 78 m². Vollausgestattet mit einer hochwertigen Möblierung, Küche und einem modernen Sanitärbereich. Klimaanlage, Glasfaser-Internetanbindung, EDV-Verkabelung, barrierefrei. Gute öffentliche Verkehrsanbindung nach Linz.



FITTINGS AND PROPERTIES

PROPERTIES


Category	Office
Usage Type	Commercial
Sales Type	Rent
Year of construction	2009
Heating	District Heating: Oil

AREAS

Usage Area ca. 78 sqm

ENERGY CERTIFICATE

Available

HWB-Value (KWh/m ² /a)	58,00
HWB Class	 C

SEGMENTATION

Total Rooms	2
Toilets	1

FEATURES

Special configuration	Accessible, Air Condition	Exploitation	Development with Water, Development with electricity
-----------------------	---------------------------	--------------	--



PRICES AND FINANCIAL INFORMATION

BASE PRICES

Net Rent	748,80 € incl. 20% VAT
Net Rent Sum	748,80 € incl. VAT

RUNNING COSTS

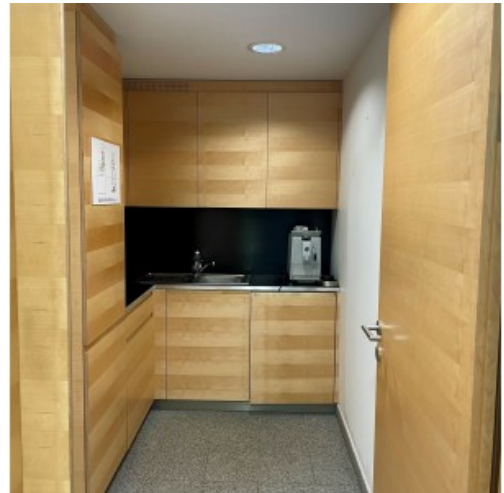
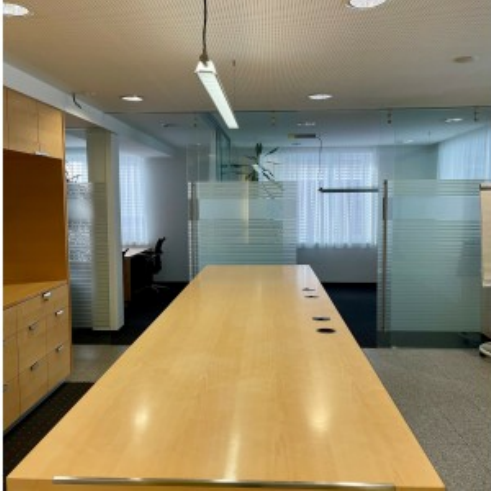
Running costs	276,76 € incl. 20% VAT
---------------	------------------------

TOTAL

Total Rent	1.025,56 € incl. VAT
------------	----------------------



GALLERY





LINKS AND DOWNLOADS

[More information](#)

[P119 Raiba_Neusserling](#)

[Energieausweis Bankstelle EG](#)

