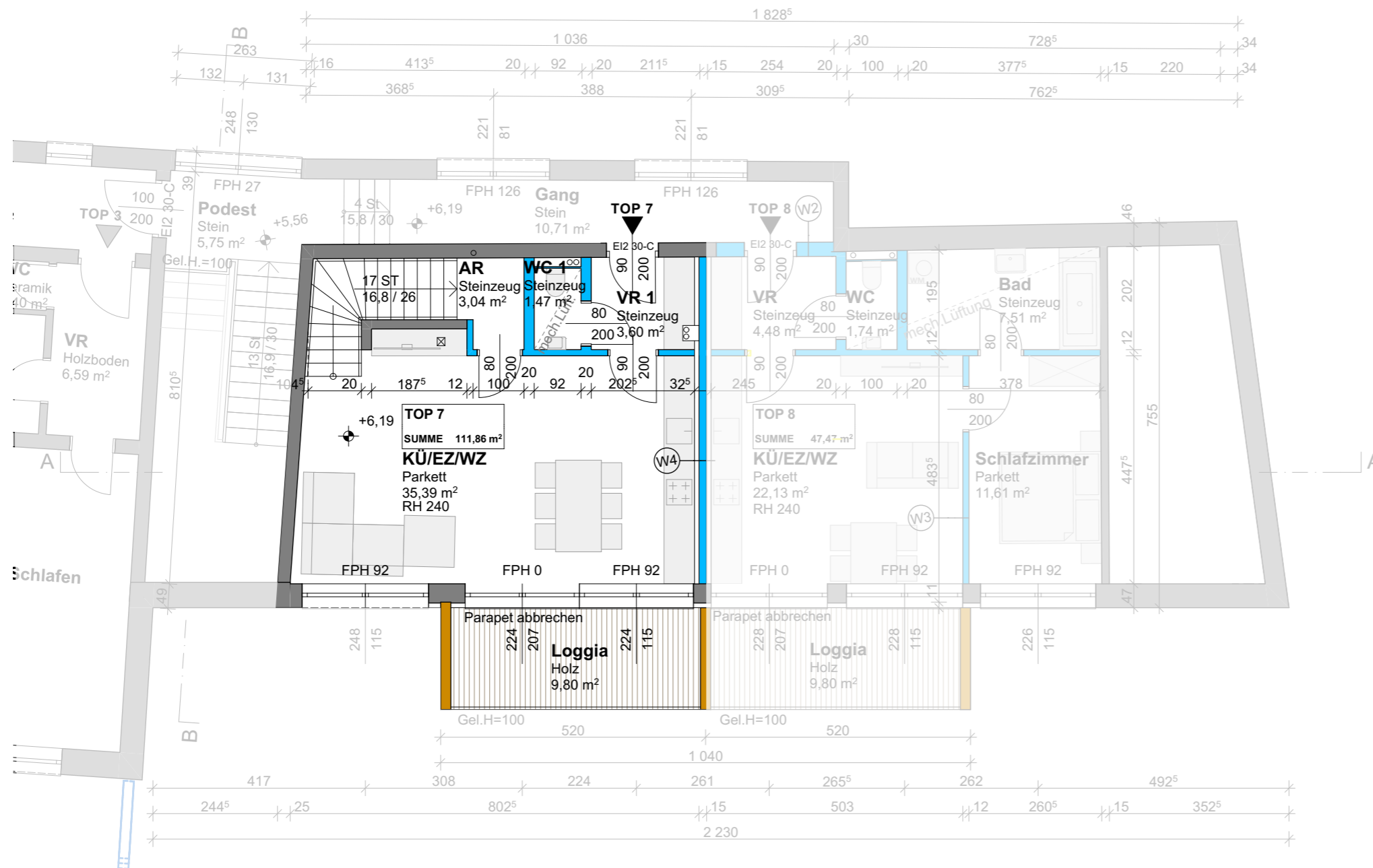
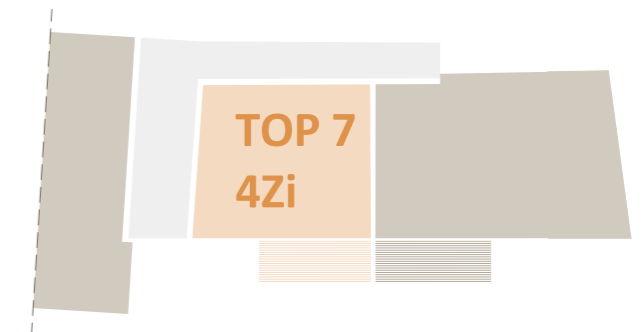


TOP 7 | 111,86m²



2. OBERGESCHOSS



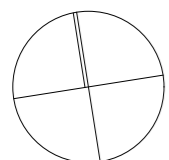
4 ZIMMER | LOGGIA

2.Obergeschoss:

Vorraum 1	3,60m ²
WC 1	1,47m ²
AR	3,04m ²
Wohn- / Essküche	35,39m ²
Loggia	9,80m ²

3.Obergeschoss:

Vorraum 2	11,33m ²
WC 2	2,94m ²
Bad	6,89m ²
SR	9,05m ²
Zimmer 1	14,44m ²
Zimmer 2	12,02m ²
Zimmer 3	11,69m ²
Balkon	9,96m ²



2. OBERGESCHOSS
M 1:100 bei Plangröße A3

ARCHIONIC Immobilien GmbH
Projekt: Windischgarsten | Angerhofweg 1