



#0001007669

## Atemberaubender Ausblick! Geräumige Stadtwohnung mit Lift und Loggia!

2700 Wiener Neustadt



Purchase price: 195.000,00 €

Living Area: 84,08 m<sup>2</sup>

Rooms: 3

### YOUR CUSTODIAN



Eveline Kamper

Immobilientreuhänderin (Maklerin)

Raiffeisen Immobilien Vermittlung

eveline.kamper@riv.at

+43 664 60 517 517 52





## DESCRIPTION

Ankommen und wohlfühlen!

Sofort bezugsfertige Dachgeschosswohnung in ruhiger Lage mit Loggia und 2 Schlafzimmer.

Fordern Sie gleich das unverbindliche Exposé mit der Adresse und der Detailbeschreibung an!



## FITTINGS AND PROPERTIES

### PROPERTIES



Category	Rooftop
Usage Type	Living
Sales Type	Buy
Form of ownership	Condominium
Year of construction	1984
Construction status	Finished
Heating	Self-Contained Central Heating: Gas

### AREAS

Living Area	84,08 sqm
Cellar Area	ca. 6 sqm
Loggia Area	8,67 sqm

## ENERGY CERTIFICATE

### *Available*

Energy Certificate Date	24.06.2022
Valid until	23.06.2032
HWB-Value (KWh/m <sup>2</sup> /a)	72,20
HWB Class	 C
fGEE Value	1,64
fGEE Class	 C

## SEGMENTATION

Total Rooms	3
Bathrooms	1
Toilets	1
Bedrooms	2
Loggias	1



## PRICES AND FINANCIAL INFORMATION

### BASE PRICES

Unit Buy Price	195.000,00 €
----------------	--------------

### RUNNING COSTS

Running costs	184,75 € incl. 10% VAT
---------------	------------------------

Repair Costs	75,65 € incl. VAT
--------------	-------------------

Running costs Lift	13,17 € incl. 10% VAT
--------------------	-----------------------

### TOTAL

Total Running Costs	273,57 € incl. VAT
---------------------	--------------------

Total buy price	195.000,00 €
-----------------	--------------

Commission Buy	3% plus 20% VAT
----------------	-----------------

### SIDECOSTS

Costs for contract	laut Tarif des Vertragserrichters
--------------------	--------------------------------------

Purchase tax percent	3,5%
----------------------	------

Land register entry percent	1,1%
-----------------------------	------

### FINANCIAL INFORMATION

Reserve Status	214.000,00 €
----------------	--------------

Reserve Deadline	23.10.2023
------------------	------------



## INFRASTRUCTURE AND SURROUNDING

Nähe zum Krankenhaus, Zentrum (ca. 1 km zum Hauptplatz), Kinderbetreuung, Schulen und Supermärkten.

Vom Hauptbahnhof fahren stündlich mehrere Züge nach Wien.

## INFRASTRUCTURE

Shopping

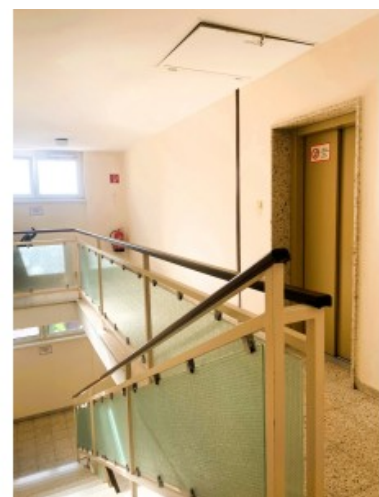
< 500m: Merkurcity



GALLERY









## LINKS AND DOWNLOADS

[More information](#)

[Grundriss\\_001](#)

